

A blue and yellow Rottne forwarder is shown in a forest setting. The machine is a large, heavy-duty vehicle with a prominent yellow front blade and a blue upper body. A driver is visible in the cab. The background consists of tall, thin trees, likely pines or firs, under a bright sky. The machine is positioned on a dirt path or clearing within the forest.

FORWARDER

*– forestry machines for
intelligent forest management*

 **ROTTNE**
first in forest



FIRST IN FOREST

Our history really started back in the fifties when Börje Karlsson, founder of ROTTNE INDUSTRI AB, helped his father to move timber in the forest. Börje, who was a creative young man full of ideas, built a loader for their work. The result was a success and he quickly saw new development opportunities. He became one of the pioneers in the industry and over the years built forwarders and harvesters that have become major sales successes.

Sixty years later, our roots are still in the Swedish forests. ROTTNE INDUSTRI even now is a privately owned company with all production within Sweden. We have one of the world's best machine ranges and a good dealer network in Sweden and abroad. Almost half of our production is exported.



SAFETY AND QUALITY

- throughout

The whole of our forwarder range, from the versatile F10^D to the powerful F18^D, satisfies all the market's needs from light thinning to demanding final felling. With the launch in 1968 of ROTTNE BLONDIN, which is still a strong brand in the industry, our forwarders have been exported to many parts of the world. Today stability and robustness are common characteristics for all ROTTNE forwarders. Product development is ongoing and with the latest technology, we meet tomorrow's demands for increased productivity and profitability. In recent years, great emphasis has also been placed on the development of the operating environment and through the COMFORT LINE cab system an important step has been taken to reduce cab vibration. Successful sales also show that we have read the market correctly. We do not just offer you a forwarder range, manufactured in Sweden, of the highest quality, but also know how, flexibility, simplicity and a warm welcome.

WORLD-CLASS COMFORT AND FUNCTIONALITY

ideal for working in dense thinning stands or for light final felling

ROTTNE F10^D has all the features demanded of a genuine thinning forwarder. Stability, flexibility and good tracking are typical characteristics for this machine.

ROTTNE F10^D now has a new diesel engine with the latest cleaning technology that conforms with the requirements for emission control in accordance with Final Tier 4 by a good margin.

The cab's large windows and low bottom edges provide fantastic visibility over the entire work area and the ROTTNE D5 control system gives the possibility of personal settings for perfect work results. A cab with a good combination of comfort and function creating an optimal working environment.

ROTTNE F10^D can also as an option be equipped with the COMFORT LINE cab suspension system that gives operators smooth and vibration-free terrain driving. Balanced bogie, crane tilt, double telescope and dozer blade are some of the options that can be chosen to adapt the forwarder for different logging conditions.

The forwarder computer and GPS/GeoInfo provides detailed information about daily production with coordinates for roadside log piles and accurate follow-up of times for loading, unloading, transport, servicing and repairs, etc.





SPECIFICATION

MODEL		ROTTNE F10 ^D 8WD	
ENGINE	Output at 2,000 rpm	125 kW / 168 hp	FT4
	Tractive force	145 kN (32 600 lbf)	
LOADER	Lifting torque / Torque	86.7 kNm (63 950 lb ft) / 27.1 kNm (19 920 lb ft)	
	Reach	7,5 / 9,3 / 9,7 m (24.6 / 30.5 / 31.8)	
HYDRAULIC SYSTEM	Pump capacity	165 litres (43.5 US gal) / 1,500 rpm	
WHEEL EQUIPMENT		600/50 x 22.5 or 710/40 x 22.5	
WEIGHT	Service weight from	14,000 kg (30.860 lbs)	
	Load capacity	10,000 kg (22.050 lbs)	

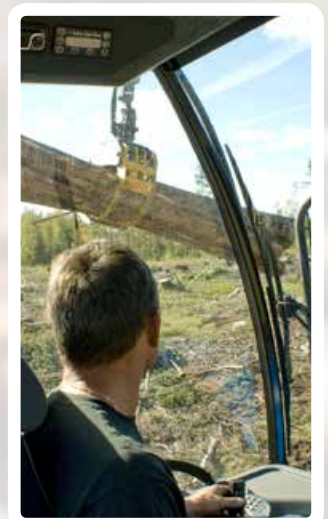


ROTTNE FORWARDER CAB'S - comfort and modern design

The spacious and comfortable cab has a modern design where the operator actually sits in the centre. A cab with a good combination of comfort and function creating an optimal working environment.

The cab's large windows and low bottom edges provide fantastic visibility over the entire work area and the ROTTNE D5 control system gives the possibility of personal settings for perfect work results.

The cab offers full standing height, is spacious and well insulated, which gives low noise levels. It is equipped with a number of storage compartments as well as a heated compartment for food containers. The air conditioner, with filters for both fresh air and recirculated air, has a high fan capacity and 16 air inlet vents in the lower part of the cab, as well as adjustable vents in the roof.





THE NEW MEDIUM SIZE CHALLENGER

– A brand new compact forwarder with 12 ton load capacity

Our new 8-wheeled forwarder Rottne F11^D is a strong workhorse which with its high tractive force provides a soft and flexible operation in tough terrain. The low centre of gravity provides the forwarder with great stability. The mechanical structure of the frame work have a design similar to the larger Rottne forwarders and the articulated joint, with 45° steering angle, is placed only 15 inch in front of the machine centre and this gives the wagon good tracking.

The comfortable cab is the same as on all Rottne forwarders and can of course be equipped with Comfort Line. The crane is Rottne RK85 with several telescope for outreach from 7,5 to 9,7 meter.

With a number of options such as crane tilt, dozer blade, double telescope and balanced bogie is it possible to adapt the forwarder for different logging conditions.

The forwarder computer and GPS/GeoInfo provides detailed information about daily production with coordinates for roadside log piles and accurate follow-up of times for loading, unloading, transport, servicing and repairs, etc.



SPECIFICATION

MODEL		ROTTNE F11 ^D 8WD	
ENGINE	Output at 2,000 rpm	125 kW / 168 hp	FT4
	Tractive force	167 kN (37 540 lbf)	
LOADER	Lifting torque / Torque	86.7 kNm (63 950 lb ft) / 27.1 kNm (19 920 lb ft)	
	Reach	7,5 / 9,3 / 9,7 m (24.6 / 30.5 / 31.8)	
HYDRAULIC SYSTEM	Pump capacity	165 litres (43.5 US gal) / 1,500 rpm	
WHEEL EQUIPMENT		710/40 x 24.5	
WEIGHT	Service weight from	16.200 kg (35 700 lbs)	
	Load capacity	12.000 kg (26 450 lbs)	



AN ALL-ROUND, HIGH PERFORMANCE FORWARDER for thinning and final felling

ROTTNE F13^D is equipped with 8 wheels and a load capacity of a full 13 tonnes. Hydraulically operated gate and front bunk makes the machine very versatile when handling different timber lengths. The forwarder can alternatively be equipped with width adjustable load bunks (Wide Load) and hydraulic stakes.

The forwarder has an articulated wagon giving unique capabilities when driving off-road. The extremely large steering angle and tight turning radius mean it is very compliant. The forwarder's powerful chassis can cope with the demands of final felling, but it is also ideal in light, dense thinning areas because of its unique wagon steering.

The ergonomically designed cab is the same as on all ROTTNE forwarders and provides the driver with maximum comfort and well-being. The large selection of extra equipment available for ROTTNE F13^D makes it possible to adapt the forwarder for different types of felling.

NEW DIESEL ENGINE

ROTTNE F13^D now has a new diesel engine with the latest cleaning technology that conforms with the requirements for emission control in accordance with Final Tier 4 by a good margin. The new FT4 engine features EGR technology, particulate filter (DPF) and SCR system with AdBlue (DEF). It is a powerful, silent engine with a good response, low vibrations and excellent fuel economy.



SPECIFICATION

MODEL		ROTTNE F13 ^D 8WD	
ENGINE	Output at 1,800 rpm	164 kW / 220 hp	FT4
	Tractive force	177 kN (39 800 lbf)	
LOADER	Lifting torque / Torque	125 kNm (92 200 lb ft) / 35.8 kNm (26 400 lb ft)	
	Reach	7.2 / 8.4 / 10 m (23.5 / 27.5 / 33 ft)	
HYDRAULIC SYSTEM	Pump capacity	210 litres (55 US gal) / 1,500 rpm	
WHEEL EQUIPMENT		710/45 x 26.5	
WEIGHT	Service weight from	19,700 kg (43 400 lbs)	
	Load capacity	13,000 kg (28 700 lbs)	





ROTTNE F13^D with Wide Load and hydraulic stakes.

OPTIMAL STEERING ANGLE — smoothest in the forest

Thanks to the articulated wagon the machine's steering angle is increased from 43° to 54°, which makes this medium-sized forwarder a versatile thinning forwarder with a high capacity.

Wagon steering is normally linked to the forwarder's frame steering but it can also be controlled separately with a joystick. In this way, the forwarder becomes easier to manoeuvre, for example, when being reversed along a strip road. When frame steering and wagon steering are synchronised, the tractor vehicle and wagon follow identical paths, which reduces the risk of driving damage along strip roads.

SERVICE FRIENDLY

High service availability is an important factor for sound and effective timber production.

Downtime is costly and it is important that the time for service and repairs is minimised. On forwarder ROTTNE F13^D it takes only a few minutes to access all areas of the tractor. The engine and transmission are easily accessed by tilting the engine hood forwards and tipping the cab sideways. The front and rear belly plates have hinges mounted under the front axle and the entire underside opens.



FIVE STAR TECHNOLOGY, COMFORT AND FUNCTIONS

Forwarder ROTTNE F15^D is suitable for late thinning and final felling, which creates opportunities for good overall economy. The forwarder now has a new diesel engine with the latest cleaning technology that conforms with the requirements for emission control in accordance with Final Tier 4 by a good margin.

The new FT4 engine features EGR technology, particulate filter (DPF) and SCR system with AdBlue (DEF). It is a powerful, silent engine with a good response, low vibrations and excellent fuel economy.

The cooling system's fan is powered by a separate hydraulic motor, which is temperature controlled and therefore not dependent on the engine speed. The fan is reversing automatically at regular intervals to blow out the cooler.

The comfortable cab fitted to all ROTTNE forwarders, provides exceptional driving characteristics when equipped with COMFORT LINE vibration damping.



ROBUST FORWARDER

ROTTNE F15^D is a powerful forwarder with a 14 tonne load capacity. It has a robust frame design that includes a strong articulated joint and an integrated articulated frame lock. The power train boasts a powerful diesel engine and conventional hydrostatic transmission providing high tractive force.

Portal bogies and a wagon frame that is slightly tapered from the bogie forward provide good ground clearance.

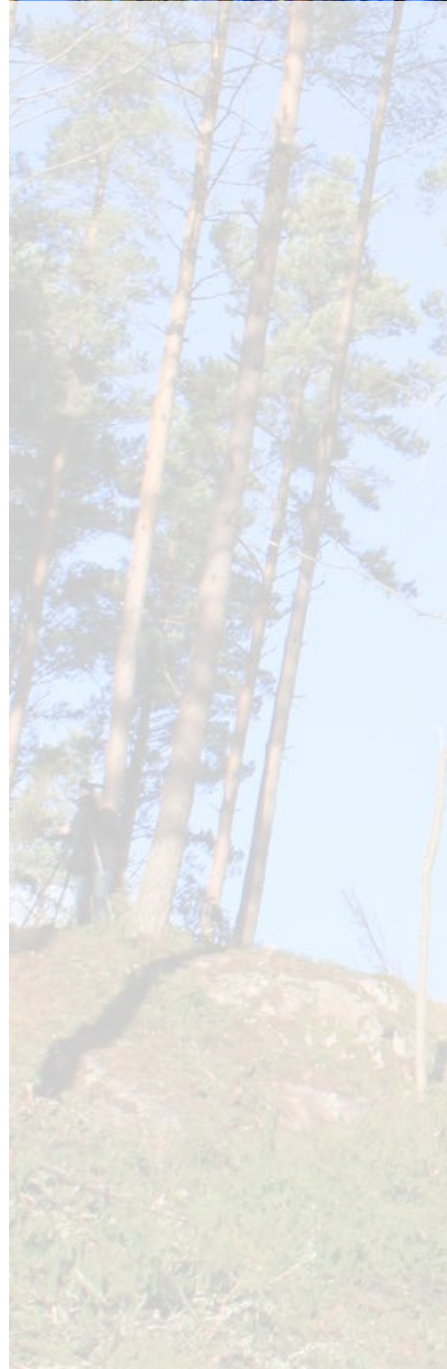
The bogie lift, which is an optional extra, makes the forwarder more flexible in certain situations. The front gate and first bunk are hydraulically adjustable, while the other load bunks, which are screwed to the frame, can be moved into different positions along the frame. The forwarder can alternatively be equipped with width adjustable load bunks (Wide Load) and hydraulic stakes, which increases its flexibility.

The forwarder loader, RK125, works rapidly and has good motion geometry and high lifting power. It has a range of 7.2 or 8.4 metres with a single telescope unit or 10 metres with a double telescope. All crane options have protected hose routing between the crane tip and grapple.



SPECIFICATION

MODEL		ROTTNE F15 ^D 8WD	
ENGINE	Output at 1,800 rpm	164 kW / 220 hp	FT4
	Tractive force	177 kN (39 800 lbf)	
LOADER	Lifting torque / Torque	125 kNm (92 200 lb ft) / 35.8 kNm (26 400 lb ft)	
	Reach	7.2 / 8.4 / 10 m (23.5 / 27.5 / 33 ft)	
HYDRAULIC SYSTEM	Pump capacity	210 litres (55 US gal) / 1,500 rpm	
WHEEL EQUIPMENT		710/45 x 26.5	
WEIGHT	Service weight from	18,700 kg (41 225 lbs)	
	Load capacity	14,000 kg (31 000 lbs)	



FORWARDER COMPUTER – FOR GOOD FOLLOW-UP

The communication between forwarders, harvesters, and clients is becoming increasingly important in order for work in the forest to become rational and productive.

Information about daily production and timber positions will soon be a part of all operators' everyday life. The forwarder computer and GPS/GeoInfo equipment are an option that simplifies reporting and provides accurate follow-up.

The forwarder computer consists of a computer and colour monitor with touch screen. This equipment enables information such as production files and maps with working routes to be automatically transferred from the harvester to the forwarder to ensure that all felled timber is collected. There is also a program for daily production with coordinates showing the position of roadside log piles as well as an operations follow-up program with times for loading, unloading and service.



ERGONOMIC OPERATOR STATION with integrated instrumentation



HYDRAULIC TILT FUNCTION – ON STEEP TERRAIN

Tilt plate for the crane tower is extra equipment that provides significant advantages when log-hauling on steep terrain. The hydraulic tilt function, 5 ° forward/28 ° backwards, means that the crane's net swing force can be maintained when the forwarder works on inclines up to 30°. When keeping the crane tower vertical the swing force will not be reduced by the self-weight of the crane.

NEW DIESEL ENGINE

ROTTNE F18^D now has a new diesel engine with the latest cleaning technology that conforms with the requirements for emission control in accordance with Final Tier 4 by a good margin.

The new FT4 engine features EGR technology, serial turbo, particulate filter (DPF) and SCR system with AdBlue (DEF). It is a powerful, silent engine with a good response, low vibrations and excellent fuel economy.



WORLD CLASS FORWARDER

for big wood

ROTTNE F18^D is a large forwarder with a load capacity of 18 tonnes, providing more efficient transport for long forwarding distances. The portal bogies, with large wide wheels, provide excellent carrying capacity and smooth and gentle travel. The wagon is available in two frame lengths and the load area has a very low centre of gravity. Even the rear of the wagon is available in two different lengths.

WELL THOUGHT-OUT – IN EVERY DETAIL

ROTTNE F18^D has a well-balanced power train with a diesel engine that can be run at a low working engine speed, as it achieves maximum torque between 1,000 and 1,500 rpm. The transmission is hydrostatic with two hydraulic motors in a 3-speed automatic gearbox that allows gear changing at full load. With a tractive force of 26 tonnes a high speed can be maintained even at maximum load. The loader RK 160 is designed for F18^D and gives top-class performance. A base with high slew torque, powerful lift capacity and a reach of 8.5 metres, means that loading and unloading can be carried out quickly and efficiently.

The operator environment is superb thanks to the light, spacious and quiet cab that also offers excellent visibility.

The ergonomically designed lever panels feature all the functions used most frequently, which means that forwarding work can be performed in a safe and flexible manner.



SPECIFICATION

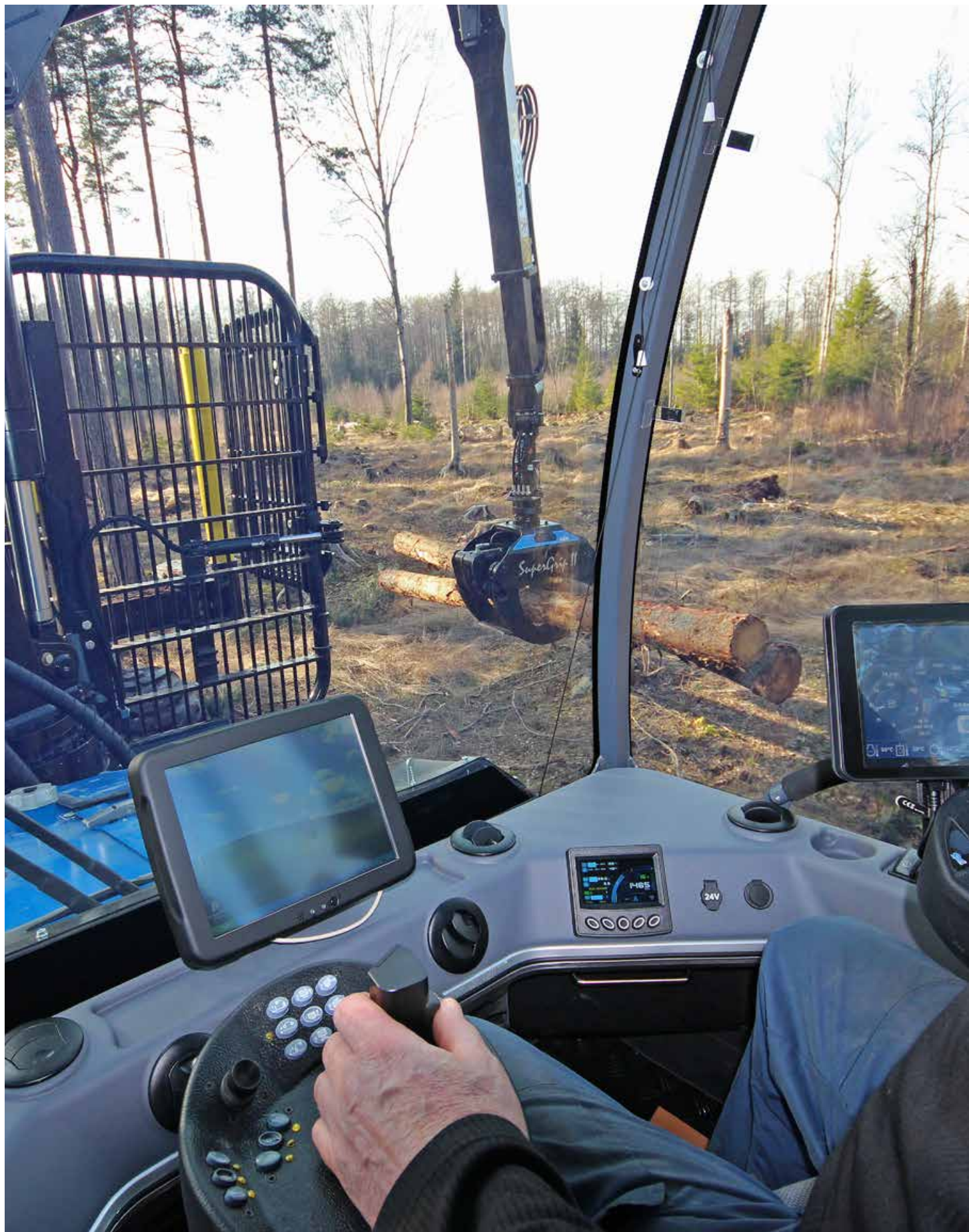
MODEL		ROTTNE F18 ^D 8WD	
ENGINE	Output at 1,800 rpm	207 kW / 278 hp	FT4
	Tractive force	260 kN (58 450 lbs)	
LOADER	Lifting torque / Torque	156 kNm (115 100 lb ft) / 45 kNm (33 200 lb ft)	
	Reach	8.5 / 10 m (28 / 33 ft)	
HYDRAULIC SYSTEM	Pump capacity	270 litres (71 US gal) / 1,500 rpm	
WHEEL EQUIPMENT		750/55 x 26,5, 710/50 x 30,5, 750/45 x 30,5	
WEIGHT	Service weight from	22,380 kg (49 340 lbs)	
	Load capacity	18,000 kg (39 700 lbs)	

VARIABLE LOAD AREA

ROTTNE F18^D can be optionally equipped with a widened load area, Wide Load or with Wide Load XL. Wide Load involves a width adjustable load area with mechanically width adjustable load bunks and hydraulically width adjustable gate. Wide Load XL has a variable load area with hydraulic stakes and hydraulically width adjustable gate. These options give better balance on the forwarder as the load is distributed across the width instead of height. Wide Load XL offers smoother, faster and easier handling during both loading and unloading.







COMFORT LINE *Generation II*

LUXURY CLASS DRIVER COMFORT WITH VIBRATION DAMPED CAB

For many years cab vibrations and impact have been eliminated on ROTTNE forwarders as we have offered the cab suspension system COMFORT LINE. Operators who have used COMFORT LINE have always praised it.

COMFORT LINE Generation II has been further developed and refined. Pressing a button activates cab damping and the cab is then raised on four hydraulic cylinders. The built-in sensors in the hydraulic cylinders are fully protected against external influences and always give exact positioning of the cab. Maintenance-free fully welded accumulators ensure the correct pressure for the best comfort. Rubber cylinder mounts to give a flexible, yet play-free mounting. The electro-hydraulic control of the system is now fully integrated in the ROTTNE D5 machine control software.



Large and comfortable cab

The spacious and modern cab with large windows and low instrument line is common to all ROTTNE forwarders. Accordingly, the cab interior, distribution boxes, computer equipment, control functions, and troubleshooting are identical, which is advantageous.

Operators who switch between different machine sizes require no setup time and service personnel only need to be trained on one system for all forwarders.

SERVICE FRIENDLINESS

a part of the forwarder's economy

Service availability is an important factor during development work on all ROTTNE machines. Downtime can prove expensive for machine owners and fast service availability can significantly reduce the time needed for servicing, repairs and cleaning.

The engine compartment is quickly accessible when the engine hood is folded forward and the belly plate is easily lowered down. The tilting cab opens up the entire power train for inspection and service. The cab has such a large tilt angle that heavier components can be lifted out from the tractor frame using basic lifting equipment.



The entire electrical distribution box opens up for service and inspection via a lockable hatch on the outside of the cab. The operator can check fuses from his position in the driver's seat.



The protective hood with integrated ladder and tanks can be opened for quick access to cable harnesses, servo valves and the valve package.

FIVE GOOD REASONS

to choose a ROTTNE forwarder

Ergonomics

Your forestry machine is a mobile work environment, where the safety and comfort of the operator come first. This is essential if you are to work at your best without getting tired, which in turn affects the productivity of the machine.

Spacious cab with large glass windows, cab damping with COMFORT LINE and effective ACC climate control are some examples of this.

Economy

Your economy and the ability to optimise the machine's profitability are always in ROTTNE's development plans. Less downtime through superb service accessibility. A load sensing hydraulic system and fuel efficient engines give reduced fuel consumption, a frame design and power train that provide the best possible off-road characteristics. These are some examples of measures that work for your economy!

Productivity

High productivity is obtained when the right machine is used in the right place. ROTTNE has forwarders for modern forestry with machines for all needs from thinning to demanding final felling. All ROTTNE machines are always built based on our vast forestry know-how, which we have gained through our long-term close contact with you and your colleagues.

Environment

We all have a shared responsibility for the forest and nature, which is an important resource. Therefore each new design and development stage is analysed from an environmental perspective.

ROTTNE's machines use engines with highly efficient exhaust emission control, eco-oils that are biodegradable, vacuum pumps to minimise spillage during hose replacement, 8-wheel forwarders for low ground pressure and a material selection where the environment is always put to the fore.

After-sales

A good machine is only as good as the after sales-service we can offer. Sooner or later, you will always need help and assistance.

ROTTNE's extensive service network of private dealers provides you with a safeguard.

Highly trained technicians, quick delivery of spare parts and personal close contact with your assigned service technician, ensure a level of safety both you and your machine always wanted.



*Specifications and equipment are subject to alteration.
Images do not always show the machine in its standard design.*

